

# **KACE** BALL VALVES

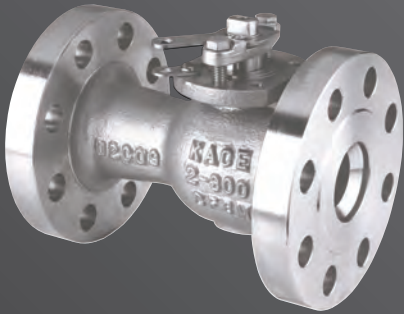


# Your Best **KACE** Scenario



**Full  
Bore**

**"F" Series**  
1/2" - 10" Sizes 150# - 300# ANSI  
1/2" - 6" Sizes 600# ANSI  
1/2" - 2" Sizes 900#/1500# ANSI  
Fire-safe - Blow-out proof stem  
Split body construction  
Bi-directional sealing  
Cast boss for bleed port  
Cavity Relief



**Reduced  
Bore**

**"U" Series**  
1 1/2" - 10" Sizes 150# - 300# ANSI  
Fire-safe - Blow-out proof stem  
End entry construction  
Bi-directional sealing  
Cast boss for bleed port  
Cavity Relief



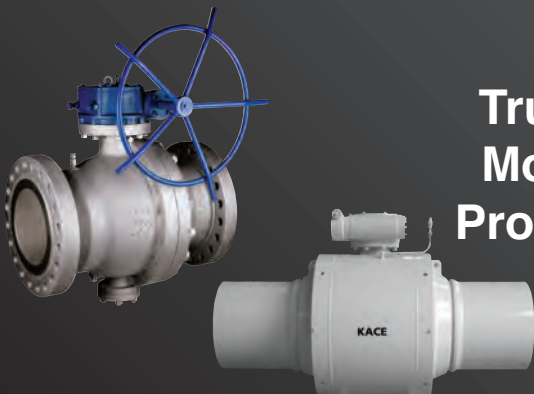
**Metal  
Seated  
Valves**

**Series 80M**  
1/2" - 4" Sizes  
2000 & 3000 psi SW-NPT-BW Ends  
Series F1M - Floating Design  
1/2" - 8" 150#, 300# & 600# ANSI  
1/2" - 1 1/2" 900# & 1500# ANSI  
Series G & TM - Trunnion Design  
2" - 24" Sizes  
150# - 2500 ANSI



**Trunnion  
Mounted  
Process**

**"T1" & "T2" Series**  
2" - 48" Sizes  
150# - 300# ANSI  
Full & reduced bores  
Fire-safe design  
Adjustable stem packing  
Bi-directional sealing  
Double block & bleed

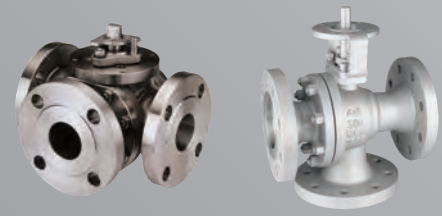


**Trunnion  
Mounted  
Production**

**"T3" & "T4" Series - 2 Piece Cast**  
**"P3" & "P4" Series - 3 Piece Forged**  
**"W3" & "W4" Series - 3 Piece Welded**  
2" - 48" Sizes  
150# - 2500# ANSI  
Full & reduced bores  
Fire-safe design  
Bi-directional sealing  
Double block & bleed  
Sealant Injectors

**"M" Series**  
**1/2" - 12" Sizes**  
**150# - 600# ANSI**  
**2 & 4 - Seat design**  
**L-port or T-port**

## Three Way Valves



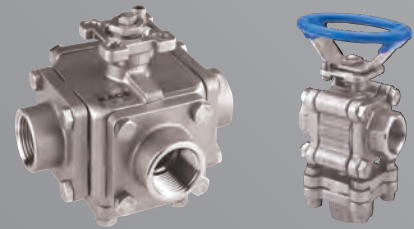
**Series 83T**  
**1/2" - 12" Sizes**  
**150# - 600# ANSI**  
**Isolation Valve**  
**Double Block and Bleed**

## Twin Valves



**Series 33 & 88D**  
**1/2" - 2" Sizes**  
**1500 - 2000 psi**  
**2 - Seat & 4 - Seat design**  
**L-port or T-port**  
**Side Entry or Bottom Entry**

## NPT-SW-BW 3-Way Valves 4-Way Valves



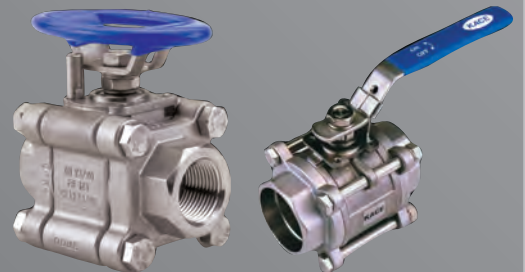
**Series 77 / 88**  
**1/4" - 4" Sizes**  
**1000 - 2000 - 3000 psi**  
**SW - NPT - BW Ends**  
**Series 88 Fire-safe**  
**Blow-out proof stem**  
**Bi-directional sealing**

## 3-Piece 2-Way Valves ISO Direct Mount



**Series 55 / 83**  
**1/2" - 4" Sizes**  
**1000 - 2000 - 3000 psi**  
**SW - NPT - BW Ends**  
**Series 83 Fire-safe**  
**Blow-out proof stem**  
**Bi-directional sealing**

## 3-Piece 2-Way Valves ISO Mounting Pad



**"SN" Series**  
**Cavity Filled**  
**Tube Weld and**  
**Tri-clamp ends**  
**Purge Ports**  
**Live Loaded Packing**  
**ISO Direct Mount**

## High Purity Valves



TM

# Ball Valves



## Economy Valve

Series 20 - 2000 / 1500 PSI  
 Series 21 - 2000 / 1500 PSI  
 1/4" - 4" Sizes  
 Series 31 - 3600PSI  
 1/4" - 2" Sizes - Fire Safe  
 Series 61 - 6000PSI  
 1/4" - 2" Sizes - Fire Safe  
 NPT Connections  
 Actuator Mounting Pad



## Metering Valve

"X" Series  
 1/2" - 12" Sizes  
 150# - 600# ANSI  
 Hi-cycle applications



Metal Seated  
 Semi-Cryogenic  
 Cavity Filled  
 Steam Jacketed  
 Wafer Style  
 Twin Valves  
 Ball x Check  
 Tank Bottom Valves

## Specialty Items and Valve Automation



**KACE BALL VALVES**  
 10440 Corporate Drive  
 Sugar Land, Texas 77478  
 Tel. 281-240-0955  
 Fax 281-240-5619  
 e-mail: [sales@kace-valves.com](mailto:sales@kace-valves.com)  
<http://www.kace-valves.com>

Local Distributor: