

Globe Valve / Type S21

NPS 1/2 - 2
 Cl. 600 / 900 / 1500 / 2500

Figure S21.058 (Cl. 600)
 Figure S21.060 (Cl. 900)
 Figure S21.061 (Cl. 1500)
 Figure S21.062 (Cl. 2500)

Design

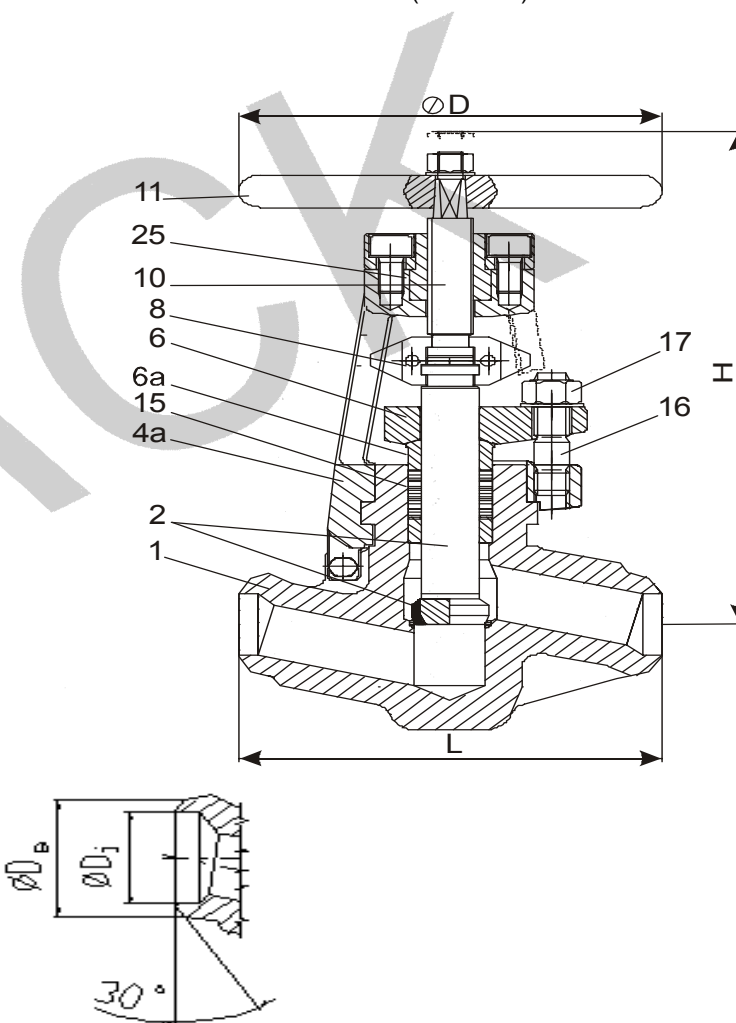
With rotating rising handwheel
 Construction of forged components
 Coverless design
 With integrated stuffing seal in the body, non rotating disc and coupling stem

Dimensions of welding ends

	NPS	butt weld ends				socket weld ends			
		ASME B 16.25				ASME B 16.11			
		1/2	1*	1 1/2	2**	1/2	1*	1 1/2	2**
Cl. 600	Da	21,3	33,5	48,3	60,4	30,33	44,46	60,33	73,79
	Di	12,7	25,4	38,1	50,8	21,7 ^{+0,5}	33,8 ^{+0,5}	48,65 ^{+0,5}	61,1 ^{+0,5}
Cl. 900	Da	21,3	33,4	48,3	60,3	32,87	48,02	64,9	80,9
	Di	12,7	22,098	34,798	47,498	21,7 ^{+0,5}	33,8 ^{+0,5}	48,65 ^{+0,5}	61,1 ^{+0,5}
Cl. 1500	Da	21,3	33,4	48,3	60,3	32,87	48,02	66,93	82,94
	Di	12,7	22,098	34,798	47,498	21,7 ^{+0,5}	33,8 ^{+0,5}	48,65 ^{+0,5}	61,1 ^{+0,5}
Cl. 2500	Da	21,3	33,5	48,3	60,4	38,46	54,11	75,06	93,1
	Di	11,176	19,05	28,448	38,1	21,7 ^{+0,5}	33,8 ^{+0,5}	48,65 ^{+0,5}	61,1 ^{+0,5}
	L	160	160	250	250	160	160	250	250
	Weight		7		27		7		27

* maximum possible diameter of Da = 49mm /

** maximum possible diameter of Da = 90mm



Materials

Item	Part name	Heat resistant carbon steel	Low temperature steel	Stainless steel
		Material	Material -50 °C / 500 bar 400 °C / 375 bar	Material 20 °C / 500 bar 550 °C / 356 bar
1	Body	A 105 A 182 Gr. F1 A 182 Gr. F11/F12 A 182 Gr. F22 A 182 Gr. F91	A 350 Gr. LF2	A 182 Gr.F316L
	Overlay	Stellite 21 (≈ 32 HRC)	Stellite 21 (≈ 32 HRC)	Stellite 21 (≈ 32 HRC)
2	Disc + Lower Stem	>10 % Cr (1.4922)	>10 % Cr (1.4922)	A 182 Gr.F316Ti
	Overlay	Stellite 6 (≈ 42 HRC)	Stellite 6 (≈ 42 HRC)	Stellite 6 (≈ 42 HRC)
4	Bonnet	A 182 Gr. F12	A 182 Gr. F12	A 182 Gr. F12
6	Gland follower	A 182 Gr. F22	A 182 Gr. F22	A 182 Gr. F22
6a	Pressure piece	A 182 Gr. F12	A 479 Gr.316Ti	A 479 Gr.316Ti
8	Coupling	A 351 CF 8M	A 351 CF 8M	A 351 CF 8M
10	Upper Stem	A 182 Gr. F6	A 182 Gr. F6	A 182 Gr. F6
11	Handwheel	A 395	A 395	A 395
15	Packing	Graphite	Graphite	Graphite
16	Stud bolt	A 193 Gr.B7	A 193 Gr.B7	A 193 Gr.B7
17	Hex.nut	A 194 Gr. 4	A 194 Gr. 4	A 194 Gr. 4
25	Screwed bush	CuAl10Fe3Mn2F60 34CrAlMo5	CuAl10Fe3Mn2F60 34CrAlMo5	CuAl10Fe3Mn2F60 34CrAlMo5

Special materials on request

Specification

Marking	MSS SP-25, ISO 5209 (EN19, AD-A4, CE)
Face-to-face dimensions	
Butt weld ends	Manufacturer standard
Socket weld ends	Manufacturer standard
Connections	
Butt weld ends	ASME B 16.25
Socket weld ends	ASME B 16.11
Pressure-temp.-rating	ASME B 16.34
Testing standard	API 598, ISO 5208 (AD-2000, DIN 3230 section 3)