



Jamesbury[®] More Than A Valve. A Total Solution.



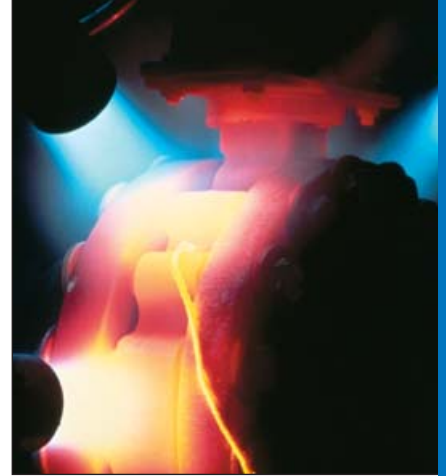


A Reputation For Design Innovation And Dependability.

A valve is only as good as the company that stands behind it. That's why Jamesbury® valve solutions from Metso Automation stand out. Since 1954, Jamesbury has been the valve brand more specifiers and buyers have come to trust when they want to improve process performance and lower their costs.

Over the years, the Jamesbury name has been synonymous with innovations in valve design, sealing technology, valve automation and network-capable valving. Innovations that have revolutionized the industry and expanded the definition of valve dependability.

We qualify our products with intense cryogenic, fire, temperature and pressure testing in our engineering and development laboratories.



Valves That Create Competitive Advantage

When it comes to Jamesbury® valve solutions, our purpose is clear: to always provide products that can help you gain a competitive advantage through improved process performance and reduced costs. This focus has led to the creation of new designs and concepts that have expanded the boundaries of valve performance beyond the ordinary. And today, we continue to research and supply new materials, seat designs and automation concepts that can take you even further.

More Than Just A Valve

From design through to engineering, testing and manufacturing, our pledge is to ensure that you receive the finest valve solutions the industry has to offer. And once you've invested in a Jamesbury valve solution, you can expect more than just the best valve. Value add-ons come in the form of applications expertise and extensive before- and after-sales service and support. When you choose a Jamesbury valve, you end up with the resources of a global leader like Metso Automation at your service, and, of course, the countless advantages that result from partnering with the best.

Our design facilities utilize the very latest CAD tools and performance simulation software to ensure that Jamesbury products perform as predicted in the real world. And our designs are complemented by our continual materials evaluation and testing.



Jamesbury products are produced in our state-of-the-art manufacturing centers, ensuring that each and every valve solution is the very best.



The value of a Jamesbury solution doesn't stop at the initial purchase. We provide 24/7 technical field service, in-depth training, and extensive service and support.



The Best Solution Starts With The Best Technology.

When it comes to valves, the most important consideration is reliability. The longer a valve performs as designed and without problems, the better. And we believe there are no other valve solutions on the market today that can outperform Jamesbury® valves.

How can we make such a bold statement? It's our technology. Sealing designs that eliminate leaks. Seat materials that withstand extraordinary extremes in temperature and pressure. Actuation that provides highest cycle life. All proven in thousands of applications and with benefits beyond anything offered by our competition.

Metso Automation offers a wide choice of actuator styles, including pneumatic and electric actuators for on-off service as well as pneumatic double-acting and spring-return actuators.



A Full Range Of Automated Valve Packages Including Network Capability.

When it comes to automated on-off valving, only Metso Automation can offer you a complete solution; one that allows us to apply network-ready capabilities up and down our entire product line. In addition, our communication and control solutions are designed for a full range of applications and environments, from general purpose to hazardous duty. And our automated valve packages, when combined with a wide range of actuator types and linkages, are designed to provide long, reliable cycle life.

Our commitment to quality even extends to our responsibility for package performance when delivering network-capable valves consisting of mixed brand components under our MatchMaker® Program. Plus, should you ever require assistance with your solutions, you can rely on a service and support program that is as comprehensive as the line of network-capable valving we offer.



Rugged solid-state modules help ensure that our valve communication and control devices perform reliably in hazardous conditions.



Our Networking by Stonel® products allow users to select valve products appropriately configured for fast, reliable connection to a full range of bus network platforms, including AS-I, DeviceNet and Foundation Fieldbus.

Unique Solutions Delivers Unique Benefits

We virtually created the quarter-turn valve industry with the Double-Seal® ball valve. This design, incorporating a unique flexible-lip polymeric seat, provided valves with tight, repeatable sealing that required far less torque, yet were easy to operate.

Then our Wafer-Sphere® high-performance butterfly valve revolutionized the fluid flow industry with its unique offset shaft and eccentric disc and polymeric sealing system. It became an ideal cost-saving replacement for larger and heavier gate valves as well as low-cost, poor-performing rubber-lined butterfly valves. And now, we have reinvented sealing technology with the introduction of our Xtreme® seat material. Xtreme seats expands valve temperature and pressure performance boundaries far beyond any material on the market.

We Leave No Application Unturned

When you choose a Jamesbury® valve, you can rest easy knowing that we can offer you a wide range of application-appropriate valves, all with unique features that make them right for virtually any process. Our products range from threaded and socket weld utility ball valves to threaded, weld end and flanged process ball valves, to high-performance butterfly and special service valves. We also offer a full array of accessories, as well as high-performance and standard actuators to help meet your every need.

We Are Always Pushing The Envelope

At Metso Automation, we never settle for second best. We continuously meet and even exceed industry and manufacturer standards and specifications. All Jamesbury valve solutions are designed, qualified and manufactured to comply with a full range of global requirements. We use only the latest manufacturing techniques, along with the most stringent quality control measures, to supply the best valve solutions in the world.

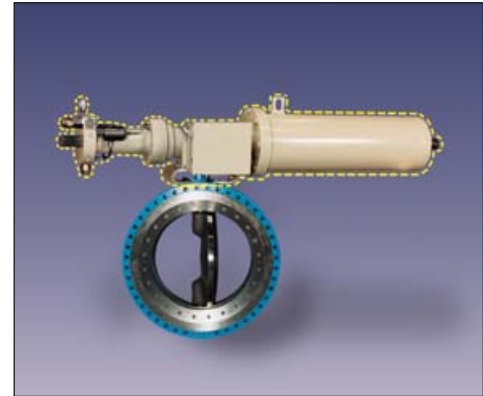
MatchMaker® Automation Program: A Program With No Match

We created the MatchMaker Automation Program to ensure standardization and reliability in automated assemblies. With our MatchMaker program, we take full responsibility for the design and performance of any automated valve/actuator assembly obtained through one of our certified distributors, where at least one of the components is a Jamesbury branded product.* The bottom line is this. Any automated assembly that includes a Jamesbury product also includes an assurance of Jamesbury dependability.

* Program does not extend to the performance of the individual non-Jamesbury component.



Jamesbury valves have been proven in thousands of real-world applications to reduce total process costs.



*Our MatchMaker certified automation program for automated assemblies assures that valves and actuators are engineered as one and backed by our full warranty.**



We test our valves under actual process conditions in our advanced flow lab to ensure our solutions perform as promised in your application.

North American and global standards.



Jamesbury valve solutions are tested to strict fire API and BSI standards.



We have solutions to meet special application requirements.

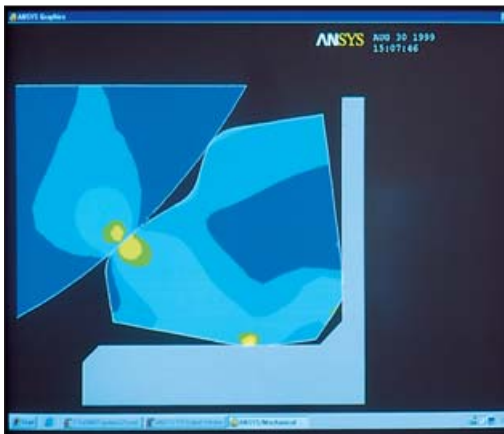




Jamesbury® high-performance ball valves meet the requirements of a full range of applications, including clean and dirty fluids and flammable liquids and gases at high flow rates.



Wafer-Sphere® high-performance butterfly valves provide a cost-effective solution for a wide range of applications where bubble-tight shutoff and trouble-free cycles are required. Fire-Tite® Wafer-Sphere butterfly valves are available for applications where API 607 is a requirement.



When combined with our industry-proven seat designs, Xtreme® seating broadens the range of temperature and pressure applications, eliminating the need for multiple seat options. The unique design produces a valve seat with less permanent deformation, which results in longer cycle life, enhanced thermal cycle performance and extended pressure transient capability.



The Value-Line® Series of ball valves offers consistent, reliable performance at a very competitive price.



Service And Support To Reduce Your Costs.

It's one thing to have the most innovative and dependable valve solutions in the industry. But when you add the superior service and support from a global leader like Metso Automation, you have an unbeatable combination that will reduce your costs even further.

We've made an enormous investment in our online capabilities, and work continuously to improve their functionality and speed so it is easier for you to conduct business with us.



Technology Also Improves Service

We have invested heavily in the area of electronic commerce. As a result, we can offer you better channel support and quicker quotations, as well as shorter transaction time and online order processing. By delivering this higher degree of speed and technology, we make it easier and more cost-effective for you to obtain the information necessary to help you select the right valve solutions for your plant, process and application.

Rely On The Expertise Of Our Distributors

You can feel equally confident in our distributor network. Each sales representative and technical support person in the network undergoes rigorous training at our factory. There, they learn the product line and how to tailor Jamesbury® valves, actuators and accessories to your

specific applications in order to maximize dependability and minimize costs. We also offer unparalleled applications expertise, thorough training and complete technical support, along with high-quality local assistance to keep you up and running at peak efficiency.

Judge For Yourself

By combining breakthrough valve designs with innovative capabilities in automation, networking, and support and service, we are confident that Jamesbury valves and actuators will continue to be the standard for dependability against which all others are judged. Remember, when it comes to increasing your productivity and lowering your total cost of ownership, you can always count on Jamesbury solutions. For the name of the Jamesbury distributor nearest you, visit our website at www.jamesbury.com.

A dedicated organization of over 200 local stocking distributors forms the backbone of our support network, which includes OEM service centers and expert field personnel.



Jamesbury field service technicians are available 24/7 to help you with product and process-related challenges.

Metso Automation

Europe

Levytie 6, P.O. Box 310
00811 Helsinki, Finland
Tel. int. +358 20 483 150
Fax int. +358 20 483 151

North America Corporate Office

44 Bearfoot Road
Northborough, Massachusetts
01532 U.S.A.
Tel. int. +508 852 0200
Fax int. +508 393 0978

44 Bowditch Drive, P.O. Box 8044
Shrewsbury, Massachusetts
01545-8044 U.S.A.
Tel. int. +1 508 852 0200
Fax int. +1 508 852 8172

Latin America

Av. Central, 181 Chácaras Reunidas
12238-430 São José dos Campos
SP BRAZIL
Tel. int. +55 12 3935 3500
Fax int. +55 12 3935 3535

Middle East

Jebel Ali Freezone, P.O. Box 17175
Dubai
United Arab Emirates
Tel. int. +971 4 883 6974
Fax int. +971 4 883 6836

Asia Pacific

501 Orchard Road
#05-09 Wheelock Place
238880 Singapore
Tel. int. +65 735 5200
Fax int. +65 735 4556

www.metsoautomation.com

