

## Stainless Steel Weather Covers

(12/12/2011)

p/n 1250, A set of negative draft filters used when stack pressure is always negative.

p/n 1174, A remote blower used when plant air is not available and the blower can be mounted inside or under some cover.

p/n 2472, A remote blower in a weather cover and would be used when the blower must be mounted outdoors. A tee fitting kit and hose is required to complete the installation.

p/n 2854, A set of dual air purge weather covers for large diameter stacks over 8 foot.

p/n 2474, A single air purge blower mounted in the transceiver weather cover and includes a sensor only cover. This may be utilized on small diameter stacks less than 8 feet.

p/n 2471, A set of sensor covers without air purge. The EMS opacity sensors are rated NEMA 4 however in some cases a customer may require the added sense of security afforded by utilizing sensor covers. These may also be used as sun shields to protect the sensor from absorbing heat in very hot desert-like conditions as they reflect the sun's rays.

p/n 2473, Air purge blower with transceiver mounting plate. Used indoors and when blower mounting on a wall or other structure is not possible or not desired. This will mount to the transceiver-mounting flange and replaces the mounting plate.

**Figure 1 EMS401, 601**



**Figure 2 EMS1304, 411**



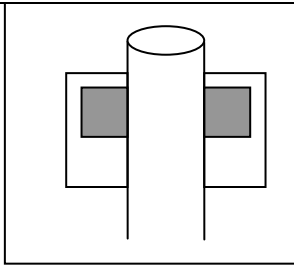
For negative pressure use Negative Draft p/n 1250.

For positive pressure less than 2-inch H<sub>2</sub>O EMS recommends the use of clean, dry instrument air @ 1-5 CFM.

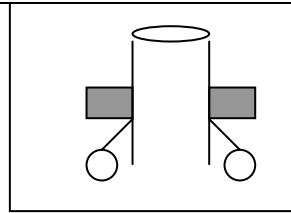
For pressures over 2-inch H<sub>2</sub>O:

1. Standard air purge blower, Min 5CFM @ 36 inches H<sub>2</sub>O, Max 36CFM @ 2 Inches H<sub>2</sub>O
2. Option 1, Air purge blower, Min 5CFM @ 44 inches H<sub>2</sub>O, Max 57CFM @ 2 Inches H<sub>2</sub>O – Call factory for price
3. Option 2, Air purge blower, Min 5CFM @ 45 inches H<sub>2</sub>O, Max 92CFM @ 2 Inches H<sub>2</sub>O, Call factory for price

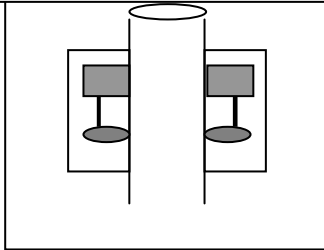
2471-Opacity Stainless Steel sensor weather cover set..



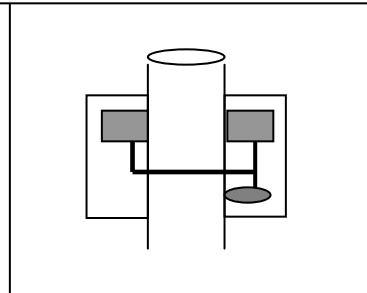
1250-Set of Two Negative draft filter assemblies for Opacity monitors



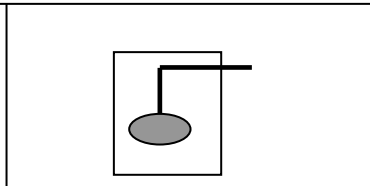
2854-Stainless Steel Weather covers (24Hx20Wx19D) for Transceiver & Retro includes two blowers' w/air cleaners, two airflow switches, and pre-wired cables to terminal strip.



2474-Stainless Steel Weather covers for Transceiver & Retro with a single air purge blower includes Tee for transceiver & retro air supply.



2472- Remote blower w/airflow switch mounted in S.S. 24Hx20Wx19D weather cover.



1174-Opacity remotely mounted blower w/air filter & flow switch

