



## Next Generation Jamesbury® Ball Valves



# Common Platform Valves Offer Uncommon Benefits.

**One look – both inside and out – and you can see that next generation Jamesbury® valves are much more than your average valve. You'll notice a streamlined common version theme that integrates five valves that make them look totally different than past models. Inside, there are even greater improvements.**

## **Longest Cycle Life**

Accelerated laboratory life cycle tests show 100 to 1000 times improvement over previous models, depending on the media. Imagine the impact on your uptime and maintenance costs.

## **Far Easier Automation**

Modular actuation / linkage choices and precise alignment make automating these common platform valves easy. In fact, technicians should be able to automate these valves 40% faster.

## **Significant Inventory Reductions**

Now you can reduce your inventory by up to 80%. Modular / interchangeable design means that internal parts, trim parts, accessories and actuation choices are the same for all of these valves. Only one parts kit is needed for a given size of valve.

## **Code Compliance**

Jamesbury valves are engineered to meet most all of the industry's important standards. Most important are compliance or approvals from ANSI, ISO, BS, MSS, API, ISA, FM, UL, ULC, CSA, CRN, NACE and PED.



# Redefining State-Of-The-Art.

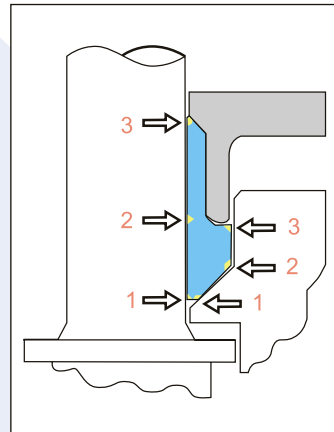
## Simplified Modular Design

By applying platform thinking to our 1/4"-2" line of Jamesbury® valves, we were able to make all of the internal and trim parts of the valves the same. The only differences are in the bodies, caps and inserts. This makes it easier, and more cost-effective, to change parts, which is especially beneficial when doing repairs. Since the parts are similar, there is no need to have numerous valve repair kits on hand. In most cases, only a single repair kit is needed for all of your Jamesbury valves, reducing your costs. The modular design is also beneficial when it comes to linkages for mounting actuators. With these new valves, users can stock far fewer linkages, thereby reducing inventory, costs and complexity of automation.



## Improved Sealing

Our new patent-pending stem seal design is beyond anything the competition can offer. It is engineered with three sealing zones – a particularly important feature on smaller valves where there is not a lot of room for innovation. We shaped the stem seal to allow the fitting of a compression plate on our smaller valves. This new patent-pending stem seal design is utilized in the Jamesbury 1/4" - 2" platform products lines.



Three zones of contact that, by the very nature of their unique design, promotes super tight sealing.

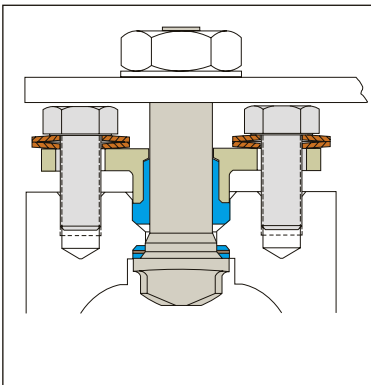
A stem that is fully guided so leak paths do not form during operation – adding to the valve's performance and dependability.

Fugitive emission standards that have been tested to ISO/CD 15484, thereby meeting important Class A requirements.

No stem seal adjustments needed after thermal and pressure cycles, reducing operator intervention and, as a result, costs.

## Live-Loaded Stem Seal

The platform valves are equipped with a live-loaded stem seal. Thanks to its innovative design, users benefit from several time- and money-saving advantages.

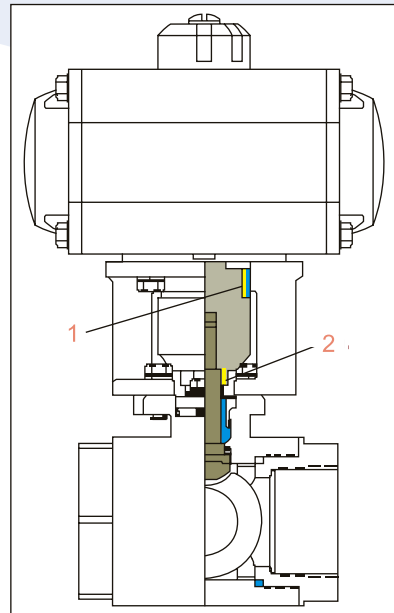


Corrosion-resistant stainless steel washers store energy so stem seal accommodates more cycles without requiring users to make many adjustments.

When adjustments are necessary, our compression plate design permits them to be made with relative ease.

The stem bearings are designed to manage thrust loads efficiently, eliminating metal contact and eventual failure.

## 1/4" - 2" Valves: Integrated Linkage Designs for Automation



Linkage is all stainless steel for corrosion resistance and appearance.

Coupling is high strength 17-4 stainless steel for wear resistance and precise open & close position.

Coupling self aligns at point 1 with a bearing between the coupling O.D. and the bracket I.D.

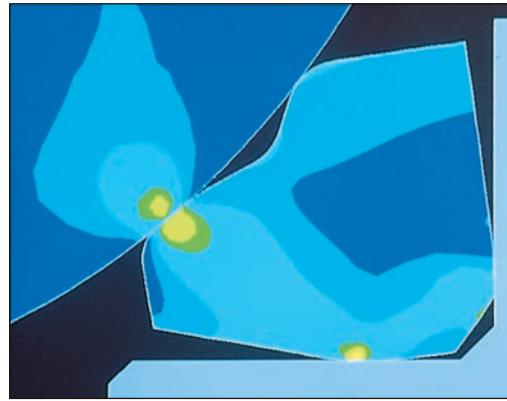
Coupling self aligns at point 2 on the stem diameter and coupling drive I.D.

# XTREME® Sealing Technology

XTREME seat material is available for each of the Jamesbury® valves listed below. XTREME expands the performance boundaries of standard valves to provide a new range of applicability. It offers advantages over PTFE, standard-filled PTFE, and even PEEK seats.

Benefits include:

- Extended temperature/pressure range
- Lower torque
- Life cycle improvements
- Exceptional chemical resistance
- Inventory reduction possibilities



*Extensive testing and qualification confirm XTREME's performance ratings.*

## Platform Products

Series	Sizes	Max. Pressure	Max. Temp.
4000	1/2"-2" (15-50DN)	2500 psi (167 bar)	600°F (316°C)
	1/2"-2" (15-50DN)	600 ANSI	550°F (288°C)
7000	1/2"-2"	150 psi (138 bar)	550°F (288°C)
		300 psi (100 bar)	
9000	1/2"-1 1/2"	150 psi (10.3bar)	550°F (288°C)
		300 psi (21.0 bar)	
ELIMINATOR™	1/4"-1" (8-12 DN)	2000 psi (138 bar)	500°F (260°C)
	1 1/4"-2" (33-50 DN)	1500 psi (100 bar)	
"A" Style	1/4"-3/4" (15-20 DN)	2000 psi (138 bar)	500°F (260°C)
	1"-2" (25-50 DN)		

## Completing The Best Solution With Service And Support.

You do not become the leading brand of ball valves on performance alone. Metso Automation has attained its premier position by also being the leader in the all-important area of service and support. At Metso Automation, we are committed to providing our customers with the very best solutions in the

industry. So whether it is in applications assistance, training, or maintenance and repair, you can be completely sure that Metso Automation is providing the most complete and optimized solution available today.



## Our New Design Concept Multiplies Performance Benefits.

For more than five decades, Jamesbury® ball valves have been the performance standard against which all others have been measured - and now we've raised the bar again. Our new common platform design for 1/4" through 2" ball valves redefines best-in-class with evolutionary improvements that will increase your process uptime and reduce maintenance costs.

By applying platform thinking to the key components of our Jamesbury valve assemblies – focusing on the all-important areas of ball, seat and sealing technologies – we were able to engineer and deliver next generation ball valve performance. Solutions that offer you vastly improved stem sealing and cycle life. In fact, depending on the application, the cycle life of these new valves can be as much as 100 times greater than that of competitive valves.

Our next-generation Jamesbury common platform valves include the following products:

- 4000 Series Ball Valves
- 7000 Series Ball Valves (1/2" – 2")
- 9000 Series Ball Valves (1/2" – 1-1/2")
- ELIMINATOR™ Ball Valves
- "A" Style Ball Valves

### The Advantages of Our Common Platform Valves Add Up.

When we undertook the task of engineering the next-generation of Jamesbury valves, we explored all options. We realized that the most important areas to improve upon would be those that would make a practical difference and save you money. So we focused on:

- Improved sealing in both the stem and seat.
- Modular design for interchangeable components and lower costs.
- Simpler automation, across the board.
- Ability to meet ANSI and other critical industry standards.



## **Metso Automation**

### **Europe**

Levytie 6, P.O. Box 310  
00811 Helsinki, Finland  
Tel. int. +358 20 483 150  
Fax int. +358 20 483 151

### **North America Corporate Office**

44 Bearfoot Road  
Northborough, Massachusetts  
01532 U.S.A.  
Tel. int. +508 852 0200  
Fax int. +508 393 0978

44 Bowditch Drive, P.O. Box 8044  
Shrewsbury, Massachusetts  
01545-8044 U.S.A.  
Tel. int. +1 508 852 0200  
Fax int. +1 508 852 8172

### **Latin America**

Av. Independência, 2500- Iporanga  
18087-101, Sorocaba-São Paulo  
Brazil  
Tel. int. +55 15 3235 9700  
Fax int. +55 15 3235 9748/49

### **Middle East**

Jebel Ali Freezone, P.O. Box 17175  
Dubai  
United Arab Emirates  
Tel. int. +971 4 883 6974  
Fax int. +971 4 883 6836

### **Asia Pacific**

238A Thomson Road  
#25-09 Novena Square Tower A  
307684 Singapore  
Tel. int. +65 6511 1011  
Fax int. +65 6250 0830

[www.metsoautomation.com](http://www.metsoautomation.com)

