

# TRANSPORTATION VALVES CATALOG





# A history of **Quality, Service** and **Innovation**

Now in its ninth decade, Conbraco Industries, Inc. is a leading manufacturer of flow control products for U.S. and international markets. The company's headquarters is based in Matthews, North Carolina with manufacturing plants and foundries located in Pageland and Conway, South Carolina.

Conbraco has a history of new product development and innovation that dates back to the company's inception in 1928. Today, the Conbraco line of products is marketed under the "Apollo Valves" brand and includes: ball valves, butterfly valves, backflow prevention devices, water pressure reducing valves, mixing valves, safety relief valves, water gauges, strainers, vacuum breakers, valve actuators and more.

Conbraco's vertically integrated manufacturing ensures a consistency of production, testing, quality and availability. It's your assurance that Conbraco flow control products will deliver long term performance advantages. All Conbraco plants are registered to ISO 9001:2008 quality standards.

The Conbraco line continues to expand - with new products, designs and advanced materials - to better serve the needs of our customers in the chemical processing, pulp and paper, petroleum, residential and commercial plumbing and heating markets, as well as manufacturing and other markets.



**PAGELAND, SC**  
Bronze Foundry and Manufacturing Plant



**PAGELAND, SC**  
Final Assembly and Distribution Center



**CONWAY, SC**  
Steel Foundry and Manufacturing Plant



**MATTHEWS, NC**  
Corporate Headquarters



For additional information, submittal sheets and manuals, visit our website.

[www.apollovalves.com](http://www.apollovalves.com)



# TRANSPORTATION VALVES

## HIGH-PERFORMANCE APOLLO® BALL VALVES CARRY THE LOAD IN BULK TRANSPORTATION

Apollo® ball valves are the reliable workhorse in a variety of applications throughout the transportation industry. Designed and built in Conbraco's ISO-9001 registered U.S. facilities, these valves feature corrosion-resistant bodies and internal components that offer extended service life. They are manufactured to stringent specs and approved by the Association of American Railroads (AAR). This specifying brochure highlights Apollo transportation valves sizes 3" and smaller. Please contact our factory for detailed information on larger Apollo valves.

### TABLE OF CONTENTS

Apollo® Part No.	AAR No.	Description	Page
<b>Unibody NPT Ball Valves</b>			
96-100	E099023	1/4"-2" NPT X NPT SS Standard Port	4
<b>Two-Piece NPT Ball Valves</b>			
73A-100-52	E119022	1/4"-2" NPT X NPT Forged CS Standard Port	5
89-100-52	E119022	3" NPT X NPT CS Standard Port	5
76-100-52	E119022	3" NPT X NPT SS Standard Port	6
76F-100-52A	E119025	1/4"-2" NPT X NPT SS Full Port	6
<b>Flange x NPT Ball Valves</b>			
87A-385-A0	E119031	1" Class 150 SS FP NPT X Flange	7-8
87A-388-A0	E119031	2" Class 150 SS FP NPT X Flange	7-8
87A-380-A0	E119031	3" Class 150 SS FP NPT X Flange	7-8
<b>Standard And Full Port Flanged Ball Valves</b>			
87A-107-01	E119024	1-1/2" Class 150 SS Standard Port	9-10
88A-107-01	E119024	1-1/2" Class 150 CS Standard Port	9-10
87A-108-01	E119024	2" Class 150 SS Standard Port	9-10
88A-108-01	E119024	2" Class 150 CS Standard Port	9-10
88A-108-24	E119024	2" Class 150 Flange CS Standard Port, Fire Safe (Graphite Packing and Seals)	9-10
88A-148-24	E119024	2" Class 150 Flange CS Standard Port, SS Ball & Stem, Fire Safe (Graphite Packing and Seals)	9-10
87A-108-24	E119024	2" Class 150 Flange SS Standard Port Fire Safe (Graphite Packing and Seals)	9-10
87A-109-01	E119024	2-1/2" Class 150 SS Standard Port	9-10
88A-109-01	E119024	2-1/2" Class 150 CS Standard Port	9-10
87A-100-01	E119024	3" Class 150 SS Standard Port	9-10
88A-100-01	E119024	3" Class 150 CS Standard Port	9-10
88A-100-24	E119024	3" Class 150 Flange CS Standard Port Fire Safe (Graphite Packing and Seals)	9-10
88A-140-24	E119024	3" Class 150 Flange CS Standard Port, SS Ball & Stem (Graphite Packing and Seals)	9-10
87A-100-24	E119024	3" Class 150 Flange SS Standard Port Fire Safe (Graphite Packing and Seals)	9-10
87A-208-01	E119030	2" Class 150 SS Full Port	9-10
88A-208-01	E119030	2" Class 150 CS Full Port	9-10
87A-209-01	E119030	2-1/2" Class 150 SS Full Port	9-10
88A-209-01	E119030	2-1/2" Class 150 CS Full Port	9-10
87A-200-01	E119030	3" Class 150 SS Full Port	9-10
88A-200-01	E119030	3" Class 150 CS Full Port	9-10
<b>Accessories</b>			
65-008-30	E099024	SS Class 150 Flange Adapter (3"x6")	11
65-008-31	E099024	SS Class 150 Flange Adapter (2"x6")	11

#### LEGEND

BV = Ball Valve	CS = Carbon Steel	FP = Full Port
SS = Stainless Steel	SP = Standard Port	



for additional information, submittal sheets and manuals, visit [www.apollovalves.com](http://www.apollovalves.com)

Customer Service (704) 841-6000

# TRANSPORTATION VALVES

## Stainless Steel Unibody NPT Ball Valves

### SATURN 96-100 SERIES — 1/4" TO 2"

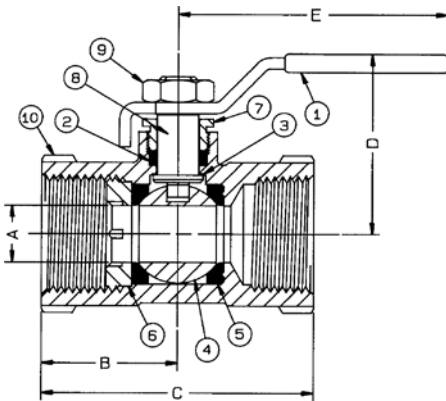
### AAR APPROVAL NO. E099023

Saturn series ball valves are unibody valves with investment cast construction. The unibody design prevents accidental disassembly of the valve during maintenance or piping repair. Blowout proof stem design is standard, as are RPTFE seats and MPTFE packing. Pressure ratings are 2000 psig to 1", 1500 psig for larger sizes.



### MATERIALS OF CONSTRUCTION

Part No.	Material
1.	Lever and Grip
2.	Stem Packing
3.	Stem Bearing
4.	Ball
5.	Seat (2)
6.	Retainer
7.	Gland Nut
8.	Stem
9.	Lever Nut (screw 1/4" to 1/2")
10.	Body



### DIMENSIONS

Part No.*	Size (In.)	A	B	C	D	E
96-101	1/4	0.37	1.14	2.21	1.68	3.87
96-102	3/8	0.37	1.14	2.21	1.68	3.87
96-103	1/2	0.37	1.14	2.21	1.68	3.87
96-104	3/4	0.50	1.32	2.70	1.75	3.87
96-105	1	0.62	1.51	3.03	2.00	4.87
96-106	1-1/4	0.81	1.79	3.62	2.18	4.87
96-107	1-1/2	1.00	1.95	4.00	2.62	5.50
96-108	2	1.25	2.28	4.73	2.81	5.50

\*Dimensions apply to suffix configuration -01

# TRANSPORTATION VALVES

## Two-Piece Carbon Steel Threaded Ball Valves With Two Tack Welds

**APOLLO® 73A-100-52 SERIES - 1/4" TO 2"**

**AAR APPROVAL NO. E119022**



Apollo® 73A-100-52 series is a 2000 psig forged A105 carbon steel ball valve with threaded ends. Apollo 89-100-52 series is an investment cast A216-WCB carbon steel ball valve with threaded ends, rated to 2000 psig to 1" and 1500 psig to 2" size. Both series are two-piece designs with regular port balls, blowout-proof stem design, RPTFE seats and MPTFE packing. Packing is adjustable. The retainers on both series are secured with tack welds to prevent accidental disassembly.

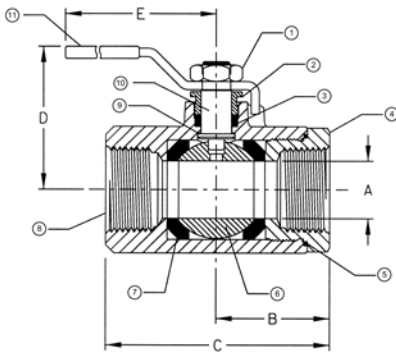
### MATERIALS OF CONSTRUCTION

Part No.	73A-100-52 Series	89-100-M2 Series
1.	Lever Nut	Steel, zinc plated
2.	Gland Nut	A108-CS
3.	Stem Packing	MPTFE
4.	Retainer	A108-CS
5.	Body Seal	RPTFE (1/2" to 2")
6.	Ball	A108-CS*
7.	Seat (2)	RPTFE
8.	Body	A105
9.	Stem Bearing	RPTFE
10.	Stem	A108-CS
11.	Lever and Grip	Steel, zinc plated+

# 2 tack welds standard \* chrome plated + with vinyl grip

### DIMENSIONS

Part No.	Size (In.)	A	B	C	D	E
73A-101-52A	1/4	0.37	1.02	2.30	1.72	3.85
73A-102-52A	3/8	0.37	1.08	2.37	1.72	3.85
73A-103-52A	1/2	0.50	1.18	2.31	1.78	3.85
73A-104-52A	3/4	0.68	1.57	3.07	2.07	4.75
73A-105-52A	1	0.87	1.73	3.40	2.18	4.75
73A-106-52	1-1/4	1.00	1.98	3.97	2.72	5.50
73A-107-52	1-1/2	1.25	2.14	4.32	3.12	7.75
73A-108-52	2	1.50	2.73	5.44	3.27	7.75



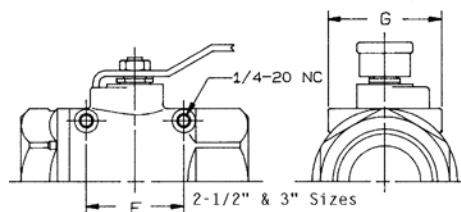
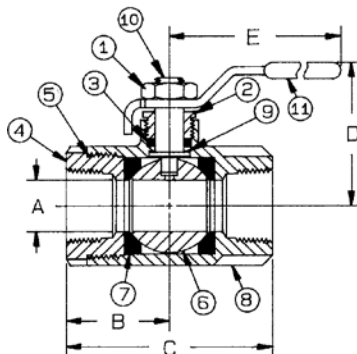
**APOLLO 89-100-52 SERIES — 3"**

**AAR APPROVAL NO. E119022**



### DIMENSIONS

Part No.	Size (In.)	A	B	C	D	E	F	G
89-100-52	3	2.50	3.37	6.75	4.12	8.00	2.75	3.37



# TRANSPORTATION VALVES

## Two-Piece Stainless Steel Threaded Ball Valves With Two Tack Welds

### APOLLO® 76-100-52 - 3"(STANDARD PORT)

AAR APPROVAL NO. E119022

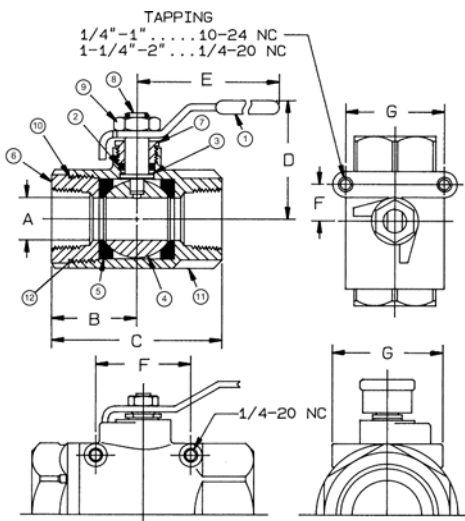


Apollo® 76 and 76F-A Series valves are two-piece investment cast ball valves that are an ideal choice for transportation applications. 76F valves offer a full port design to maximize flow efficiency.

Sized from 1/4" to 3", these valves feature threaded end connections and lever handles as standard. They meet NACE MR-01-75 guidelines. Apollo 76-100-52 and 76F-100 Series ball valves feature an A351 CF8M stainless steel body and investment cast components for high performance and extended service life. They offer a blowout-proof stem design, adjustable packing gland, stainless steel lever and nut and RPTFE seats and stuffing box ring.

#### MATERIALS OF CONSTRUCTION

Part No.	76-100-52 Series	76F-100-52A Series
1.	Lever and Grip	304 SS/vinyl grip
2.	Stem Packing	MPTFE
3.	Stem Bearing	RPTFE
4.	Ball	A276 316 SS
5.	Seat (2)	RPTFE
6.	Retainer	1/4" - 1": A276 316 SS 1-1/4" - 2": A351 CF8M
7.	Gland/Gland Nut	A276 316 SS
8.	Stem	A276 316 SS
9.	Lever Nut	304 SS
10.	Washer	n/a
11.	Body	A351 CF8M
12.	Body Seal	PTFE (1-1/4" - 2")



#### DIMENSIONS

Part No.	Size (In.)	A	B	C	D	E	F	G
76-100-52	3.00	2.50	3.37	6.75	4.12	8.00	2.75	3.37

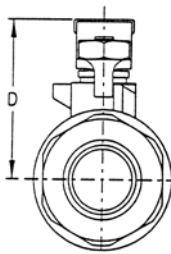
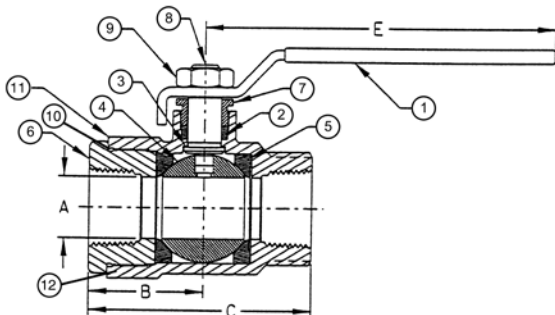
### APOLLO 76F-100-52A SERIES (FULL PORT)

AAR APPROVAL NO. E119025



#### DIMENSIONS

Part No.	Size (In.)	A	B	C	D	E
76F-101-52	1/4	0.37	0.95	1.91	1.60	3.85
76F-102-52	3/8	0.37	0.95	1.91	1.60	3.85
76F-103-52A	1/2	0.50	1.10	2.23	1.73	3.85
76F-104-52A	3/4	0.81	1.56	3.06	2.13	4.75
76F-105-52A	1	1.00	1.71	3.45	2.66	5.40
76F-106-52A	1-1/4	1.25	2.05	4.10	2.88	5.40
76F-107-52A	1-1/2	1.50	2.33	4.66	3.30	7.75
76F-108-52A	2	2.00	2.68	5.37	3.70	7.75



# TRANSPORTATION VALVES

## Flange x NPT Stainless Steel ANSI Class 150 Full Port AAR Ball Valves

**APOLLO® 87A-385-A0 - 1"**

**APOLLO 87A-388-A0 - 2"**

**APOLLO 87A-380-A0 - 3"**

**AAR APPROVAL NO. E119031**

Apollo® 87A-385-A0, 87A-388-A0 and 87A-380-A0 valves are A351 CF8M stainless steel ball valves with threaded end x ANSI 150 flanged connections. Like all Apollo ball valves, they feature blowout-proof stem design and adjustable packing. In addition, these valves have standard position locking device and anti-static grounding device for ball and stem. An ISO 5211 actuator mounting pad is a standard feature as well.

Used primarily for loading and unloading of tank cars, these valves have additional features built in to address this application. The ball is slot vented to relieve thermal expansion of volatile media in the valve's body cavity. They are of firesafe construction to guard against leakage in case of accident. A special no-rise handle enables installation in tight spaces where low overall height is a concern. Most important, they are full-port design to maximize flow and minimize loading/unloading time.

In addition, these valves are bolted construction, so are repairable to ensure leakproof installations. They can also be disassembled for complete cleaning of all interior surfaces.



### Cv FACTOR

Size (In.)	Typical Standard Port Ball Valve	Apollo 87A-380 Series Full Port Ball Valves	Percentage Greater Flow	Loading/Unloading Time Decrease
1	43	75	74%	43%
2	108	410	280%	74%
3	370	1021	176%	64%

*(Cv is defined as gallons per minute of water that will flow through the valve at 1 psig pressure differential.)*

# TRANSPORTATION VALVES

## Flange x NPT Stainless Steel ANSI Class 150 Full Port AAR Ball Valves (cont'd)

### MATERIALS OF CONSTRUCTION

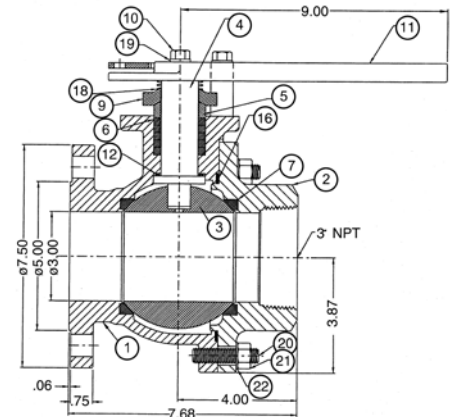
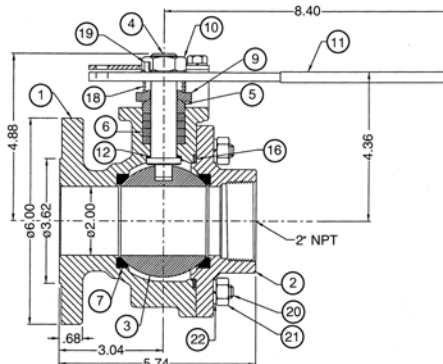
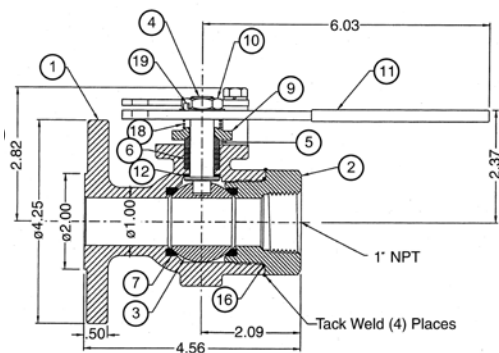
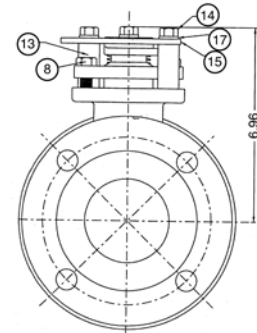
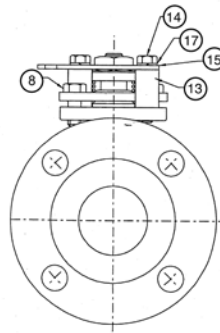
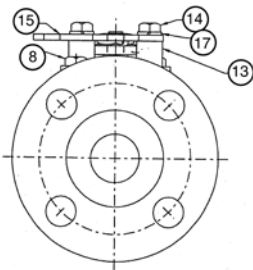
Part No.	87A-385 Series	87A-388 Series	87A-380 Series
1.	Body	ASTM A351 CF8M	ASTM A351 CF8M
2.	Retainer	ASTM A276 Type 316	ASTM A351 CF8M
3.	Ball	ASTM A276 Type 316	ASTM A276 Type 316
4.	Stem	ASTM A276 Type 316	ASTM A276 Type 316
5.	Packing Gland	ASTM A276 Type 316	ASTM A276 Type 316
6.	Stem Seals	Graphoil	Graphoil
7.	Seats	RPTFE	RPTFE
8.	Gland Screws	ASTM A193 B8 Class 1	ASTM A193 B8 Class 1
9.	Gland Plate	302 or 304 SS	302 or 304 SS
10.	Stem Nut	316 SS	316 SS
11.	Lever	302 or 304 SS/vinyl grip	302 or 304 SS/vinyl grip
12.	Stem Bearing	RPTFE	RPTFE
13.	Stop	ASTM A276 Type 316	ASTM A276 Type 316
14.	Stop Screw	316 SS	316 SS
15.	Lock Plate	302 or 304 SS	302 or 304 SS
16.	Body Seal	Graphoil	Graphoil
17.	Lockwasher	18-8 SS	18-8 SS
18.	Grounding Spring	Stainless Steel	Stainless Steel
19.	Lockwasher	302 SS	302 SS
20.	Body Joint Stud	n/a	ASTM A193 Grade B8M
21.	Body Joint Nut	n/a	ASTM A194 Grade 8
22.	Lockwasher	n/a	302 SS

\* Lever screw is 18-8 SS. Note: 87A-100 Series uses 302 or 304 SS Lockwasher. For special configurations see factory.

87A-385-A0

87A-388-A0

87A-380-A0





# TRANSPORTATION VALVES

## Standard and Full Port Flanged Ball Valves

**APOLLO® 87A/88A-100 SERIES (STANDARD PORT)**

**SIZES : 1/2" - 8" AAR APPROVAL NO. E119024**

**APOLLO 87A/88A-200 SERIES (FULL PORT)**

**SIZES : 1/2" - 6" AAR APPROVAL NO. E119030**



Apollo® Series 87A and 88A are becoming the industry's preferred flanged ball valves since they include many standard features available only as costly options on other brands. These Class 150 valves feature a blowout-proof stem design that meets API 608 torsional requirements. Their dual position lock plate (another standard feature) meets OSHA lockout/tagging regulations. The valves are "actuator friendly" featuring an ISO 5211 mounting pad.

The valves are equipped with a grounded ball and stem. The ball is vented in the stem slot to relieve body cavity pressure in the open position. A heavy-duty 316 stainless steel gland plate mates with the packing gland to assure secure, self-aligning compression of the packing.

Standard seats for the 87A and 88A Series are RPTFE. Their deep-pocketed design protects the seats from pressure spikes and media buildup. An RPTFE gasket is also standard; spiral wound 316 SS gaskets with PTFE or graphite fillers are optional. Valves are also available fire-tested to API 607 5th edition by specifying -24 option. Stainless steel ball and seat are also available for the 88A Series.

While most transportation applications require valves sized 3" or smaller, Apollo flanged ball valves are available in larger sizes, as needed.

### MATERIALS OF CONSTRUCTION

Part No.		Stainless Steel 87A-100, 87A-200	Carbon Steel 88A-100, 88A-200
1.	Body	ASTM A351 CF8M	ASTM A216 WCB
2.	Retainer	ASTM A351 CF8M	ASTM A216 WCB
3.	Ball	ASTM A276 Type 316+	ASTM A216 WCB
4.	Stem	ASTM A276 Type 316	ASTM A108 Type 1215
5.	Packing Gland	ASTM A276 Type 316	ASTM A106 Type 1215
6.	Stem Seals	PTFE	PTFE
7.	Seats	RPTFE	RPTFE
8.	Gland Screws	ASTM A193 B8 Class 1	ASTM A193 B7
9.	Gland Plate	316 SS	316 SS
10.	Stem Nut	316 SS	316 SS
11.	Lever	304 SS*	ASTM A368 Steel*
12.	Stem Bearing	RPTFE	RPTFE
13.	Stop	ASTM A276 Type 316	ASTM A108 Type 1215
14.	Stop Screw	316 SS	SAE J429 Grade 2
15.	Lock Plate	302 or 304 SS	ASTM A368 Steel
16.	Body Seal	RPTFE	RPTFE
17.	Grounding Spring	Stainless Steel	Stainless Steel
18.	Body Joint Stud	ASTM A194 Grade B8M	ASTM A193 Grade B7
19.	Body Joint Nut	ASTM A194 Grade 8	ASTM A194 Grade 2H

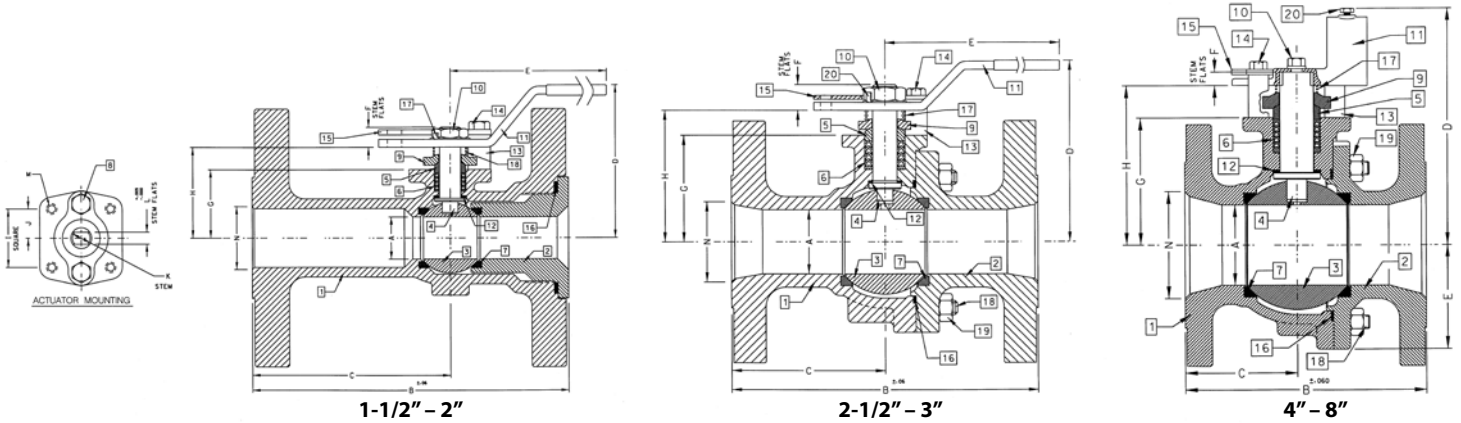
+ Also available in A351 CF8M

\* Equipped with vinyl grip

Note: Valves 3" Full Port or 4" Standard Port and larger use handle adapter and pipe in lieu of stamped lever

# TRANSPORTATION VALVES

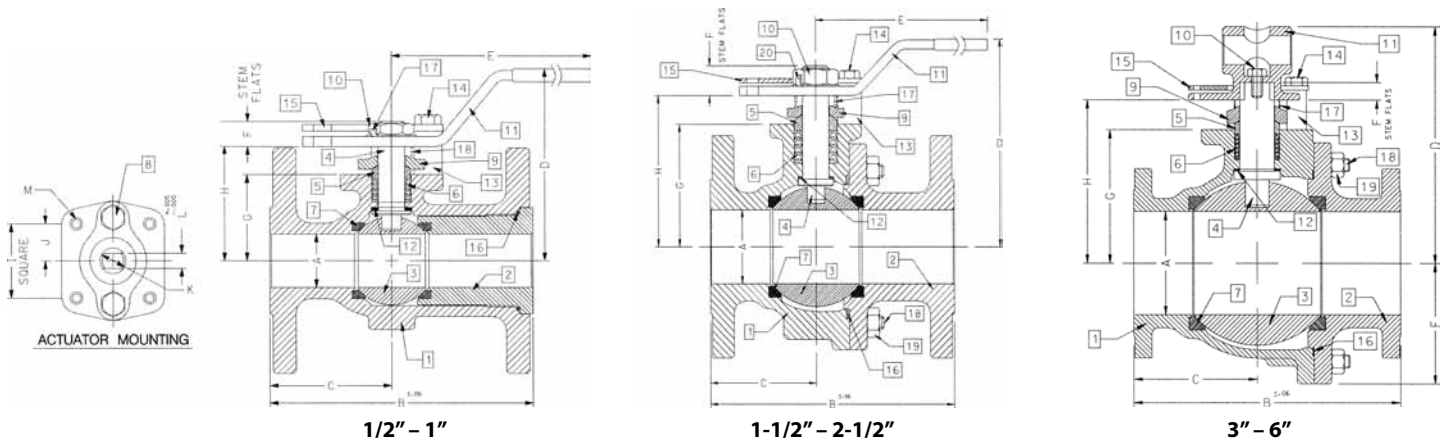
## Standard and Full Port Flanged Ball Valves (continued)



### DIMENSIONS STANDARD PORT

Part No.*	Size (In.)	A	B	C	D	E	F	G	H	I	J	K	L	M	N	WT.
87A/88A-107	1-1/2	1.25	6.50	3.69	3.62	6.03	0.47	1.62	2.15	1.392	0.696	0.50	0.287	1/4-20	1.50	09.0
87A/88A-108	2	1.50	7.00	3.69	4.62	6.65	0.72	2.41	3.09	1.949	0.974	0.62	0.412	5/16-18	2.00	18.0
87A/88A-109	2-1/2	2.00	7.50	3.50	5.61	8.40	0.80	3.31	4.08	1.949	0.974	0.75	0.477	5/16-18	2.50	27.0
87A/88A-100	3	2.50	8.00	3.51	6.23	8.40	0.80	3.93	4.70	1.949	0.974	0.75	0.477	5/16-18	3.00	34.0
87A/88A-10A	4	3.00	9.00	4.18	8.80	3.88	0.50	4.75	5.95	2.840	1.420	1.25	0.725	3/8-16	4.00	73.0
87A/88A-10C	6	4.00	10.50	4.69	9.99	5.13	5.50	5.94	7.13	2.840	1.420	1.25	0.725	3/8-16	6.00	117.0
87A/88A-10E	8	6.00	18.00	9.00	13.73	7.00	1.00	7.75	9.48	4.596	2.298	2.00	1.375	3/4-10	8.00	310.0

\* Dimensions apply to suffix configurations -01 and -24



### DIMENSIONS FULL PORT

Part No.*	Size (In.)	A	B	C	D	E	F	G	H	I	J	K	L	M	WT.
87A/88A-203	1/2	0.50	4.25	2.06	3.28	5.14	0.30	1.09	1.38	1.002	0.501	0.37	0.245	10-24	5.0
87A/88A-204	3/4	0.75	4.62	2.18	3.89	5.56	0.39	1.65	1.96	1.392	0.696	0.50	0.287	1/4-20	6.0
87A/88A-205	1	1.00	5.00	2.32	3.62	6.03	0.47	1.62	2.15	1.392	0.696	0.50	0.287	1/4-20	7.0
87A/88A-207	1-1/2	1.50	6.50	3.00	4.62	6.65	0.72	2.41	3.09	1.949	0.974	0.62	0.412	5/16-18	14.0
87A/88A-208	2	2.00	7.00	3.04	5.61	8.40	0.80	3.31	4.08	1.949	0.974	0.75	0.477	5/16-18	25.0
87A/88A-209	2-1/2	2.50	7.50	3.34	6.23	8.40	0.80	3.93	4.70	1.949	0.974	0.75	0.477	5/16-18	30.0
87A/88A-200	3	3.00	8.00	3.68	8.80	3.88	0.50	4.75	5.95	2.840	1.420	1.25	0.725	3/8-16	60.0
87A/88A-20A	4	4.00	9.00	3.94	9.99	5.13	0.50	5.94	7.13	2.840	1.420	1.25	0.725	3/8-16	91.0
87A/88A-20C	6	6.00	15.50	7.19	13.73	7.00	1.00	7.75	9.48	4.596	2.298	2.00	1.375	3/4-10	248.0

\* Dimensions apply to suffix configurations -01 and -24

# TRANSPORTATION VALVES

## Accessories: Stainless Steel Tank Car Valve Adapters

**APOLLO® 65-008-31 - 2" X 6"**

**AAR APPROVAL NO. E099024**

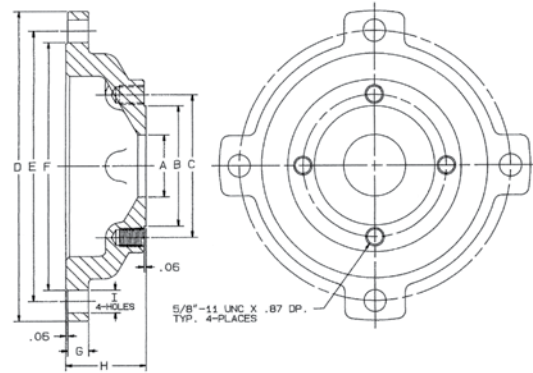
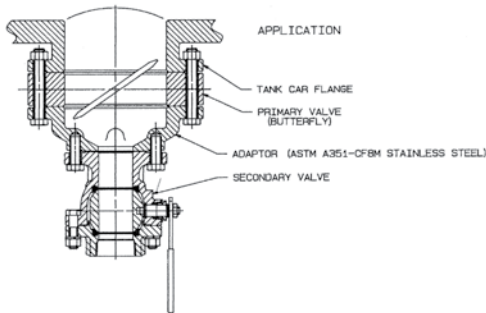
**APOLLO 65-008-30 - 3" X 6"**

Apollo® 65-008 Series valve adapters provide a reliable connection between a large-sized primary butterfly valve on a tank car and a smaller secondary valve. The valve adapters feature stainless steel construction.



### DIMENSIONS

Part No.	Size (In.)	A	B	C	D	E	F	G	H	I
65-008-31	2 x 6	2.06	4.00	4.75	10.31	9.00	8.25	0.68	2.65	0.75
65-008-30	3 x 6	3.06	5.25	6.00	10.31	9.00	8.25	0.66	2.03	0.75



## INTERNATIONAL SALES REPS & REGIONAL MANAGERS

	AREAS COVERED	EMAIL	PHONE	FAX	
<b>INTERNATIONAL</b>	<b>Conbraco International Sales:</b>				
	Jose Arias	Mexico	jose.arias@conbraco.com	956-631-4542	956-631-4681
	Luis Guzman	Caribbean	luis.guzman@conbraco.com	787-739-5620	
	JR Jefferson	Central & South America	jr.jefferson@conbraco.com	832-220-3783	
	Mike Link	United Kingdom	michael.link@pegler.yorkshire.co.uk	44-0-1302-560-560	44-0-1302-367-661
	Luke Liu	China	luke.liu@conbraco.com	411-869-02498	411-869-02498
	Jonathan Yap	Asia Pacific/India	jonathan.yap@conbraco.com	65-9626-9241	65-6753-0131
	Pegler Yorkshire Mid East	Europe/Africa/Australia/Israel Middle East (except Israel)	Contact Customer Service pydubai@mailme.ae	704-841-6000 971-4-454-2353	704-841-6021 971-4-454-2352
<b>REGIONAL MANAGERS</b>	<b>APOLLO VALVES REGIONAL SALES DIRECTORS</b>			P.O. BOX 247, Matthews, NC 28106	
	Brian Blalock	East Coast	brian.blalock@conbraco.com	704-614-3744	704-841-6021
	Todd Green	Midwest	todd.green@conbraco.com	574-206-3956	
	Skip Wilson	West	skip.wilson@conbraco.com	760-330-3293	775-854-5722
	<b>APOLLO VALVES REGIONAL MANAGERS</b>				
	Kevin Ashworth	Mid Atlantic	kevin.ashworth@conbraco.com	757-272-6200	
	Steve Brown	Northwest	steve.brown@conbraco.com	425-985-5095	253-862-3548
	Andy Fretz	Canada - Commercial	andy.fretz@conbraco.com	647-281-3161	905-761-6666
	Ben Lauletta	Northeast	ben.lauletta@conbraco.com	518-867-7601	
	Sanford Pauly	North Central	sanford.pauly@conbraco.com	513-716-7772	513-321-7717
	Hector Rivera	Florida	hector.rivera@conbraco.com	786-210-7010	
	James Salvador	South Central - Industrial	james.salvador@conbraco.com	832-776-5547	
	Nick Shelley	South Central - Commercial	nick.shelley@conbraco.com	214-790-4157	
	Jim Todman	Canada - Industrial	jim.todman@conbraco.com	905-407-8385	905-761-6666
	<b>LASCO FITTINGS IRRIGATION REGIONAL MANAGERS</b>			P.O. BOX 116, Brownsville, TN 38012	
David Beyer	Northeast	dbeyer@lascofittings.com	561-718-9379		
Ron Modugno	West	rmodugno@lascofittings.com	661-910-5058	661-775-0713	
Jimmy White	Central	jwhite@lascofittings.com	731-234-2372	731-779-3608	
Rick Williamson	Southeast	rwilliamson@lascofittings.com	386-451-2307		



for additional information, submittal sheets and manuals, visit [www.apollovalves.com](http://www.apollovalves.com)

**Customer Service (704) 841-6000**



## SALES & CUSTOMER SERVICE:

Phone: (704) 841-6000

Fax: (704) 841-6020

www.apollovalves.com

	AGENCY	AREAS COVERED	EMAIL	PHONE	FAX	
<b>SOUTHEAST REGION</b>	Mid South Marketing, Inc.	VA/MD/Washington, D.C./WV-East	midsouth7@aol.com	804-213-3801	804-213-3802	
	Pro Marketing, Inc.	NC/SC/TN-East	sales@promarketinginc.net	864-578-4334	864-578-4889	
	Spirit Group	FL (except Panhandle)	info@spiritgroupinc.com	407-291-6035	407-299-0378	
	Valve Pro Sales	AL/FL Panhandle	apollovalves44@yahoo.com	256-233-7538	866-207-6905	
	White Wolf Group	GA	info@whitewolfgroupinc.com	800-401-4870	888-908-9372	
<b>SOUTHERN REGION</b>	BWC Inc.	LA (Commercial Products)	chuck@bwcassoc.com	504-734-0229	504-734-3711	
	Marathon Flow Control	TX, OK, KS except Northeast, LA (Industrial)	sales@marathonflowcontrol.com	214-201-0100	214-201-0104	
	Southern Marketing Group	MS/TN-West/AR/Bowie Cty.-TX	SMG49@bellsouth.net	901-547-0042	901-547-0035	
<b>MIDWESTERN REGION</b>	FourMation Sales	MN/ND/SD/WI-West	ryan@fourmationsales.com	763-420-6900	763-420-6993	
	Marshall-Rodeno Heartland	NE/IA (Except River Counties)	trodeno@marshallrodeno.com	303-575-6701	303-575-6706	
	Midwest Spec	KY/OH/PA-West/WV-West	glsales@mwspec.com	330-538-0406	330-538-0410	
	New Tech Marketing	Northern-IL/WI-East/IN/MI-UP/IA-River Counties	sales@new-techmarketing.com	630-378-4300	630-378-0343	
	New Tech Marketing	MO/Southern IL/Northeast Kansas	ntm112@aol.com	618-394-0329	618-394-0427	
	V.E. Sales Co., Inc.	MI (Except Upper Peninsula)	tomv@vesalesinc.com	586-774-7760	586-774-1490	
<b>WESTERN REGION</b>	Elmco Duddy	CA - South	tduddy@elmcoduddy.com	626-333-9942	626-855-4811	
	Gordon & Associates	WA, OR, AK, Northern counties ID	laura@gordonandassoc.com	360-566-1470	360-566-1478	
	HC Fletcher	CA - North (AB 1953 compliant product)	apollosales@hcfletcher.com	800-432-7047	949-660-9072	
	Marshall-Rodeno Associated	CO/WY/MT/ID-SE/UT/NV-NE/NM/El Paso-TX	trodeno@marshallrodeno.com	303-575-6701	303-575-6706	
	Romatec	CA - North PVF (non AB 1953)	apollo@romatec.com	877-530-3530	661-588-3534	
	Southwest Valves	CA (Waterworks and Fire Protection)	d.burell@southwestvalve.com	559-261-2703	559-261-2711	
	Southwestern Industrial Sales Co.	AZ/Nevada-SW	eduardop@sw-ind.com	480-458-5838	480-458-5843	
	Spec Management Group	HI	msmarch4@cox.net	949-481-4225	949-487-0990	
<b>NORTHEAST REGION</b>	Conroy & Griese Sales, Inc.	NY-East/NJ-North	iezzi52@aol.com	856-663-4440	856-663-6644	
	Keith Engle & Associates	OEM accounts	keith.enge@verizon.net	610-827-9560	610-827-9561	
	Layden Company	NY-Upstate/PA-East/DE/NJ-South	joejr@laydencompany.com	610-363-6657	877-529-3361	
	Urell, Inc.	MA/New England States	conbraco@urell.com	617-923-9500	617-926-9414	
<b>IRRIGATION ONLY REPS</b>	Active Sales Northwest, Inc.	OR, WA, Western ID	skactive@aol.com	541-726-0320	541-726-1148	
	Biz Sales Company	OH, KY, MI, IN, parts of PA, WV, WI	dzavelson@bizpvf.com	216-595-2888	216-595-2899	
	Formation Sales	MN/ND/SD/WI-West	dean@formationsales.com	763-262-4700	763-262-4740	
	Jim Benton & Associates	AL, FL Panhandle	jim@bentonandassoc.com	205-664-1221	205-664-1277	
	J&J Midwest Sales	NE, IA, MO, KS	john@jandjmidwestsales.com	314-422-8419		
	Marel Enterprises	New England, NY, DE, MD, VA, DC, parts of PA & WV	marelenterprise@gmail.com	631-271-1718	631-427-8558	
	Marshall-Rodeno Associated	CO/WY/MT/ID-SE/UT/NV-NE	trodeno@marshallrodeno.com	303-575-6701	303-575-6706	
	NSC Marketing Group Inc.	OK	nsc_tulsa@sbcglobal.net	918-627-5340	918-664-1408	
	Pro Marketing, Inc.	NC/SC/TN-East	sales@promarketinginc.net	864-578-4334	864-578-4889	
	Southern Marketing Group	MS/TN-West/AR/Bowie Cty.-TX	SMG49@bellsouth.net	901-547-0042	901-547-0035	
	Spec Management Group	CA-South	msmarch4@cox.net	949-481-4225	949-487-0990	
	<b>CANADA</b>	Agences J. Pierre Sylvain, Inc.	Quebec	agencespsylvain@golden.net	450-655-9588	450-641-2737
		Barclay Sales Ltd.	British Columbia	bbarclay@barclaysales.com	604-945-1010	604-945-3030
Conbraco Industries, Canada		178 Pennsylvania Ave., Unit 1, Concord, Ontario L4K 4B1	conbraco.canada@conbraco.com	905-761-6161	905-761-6666	
D & M Mechanical Sales		Ontario/East	don@dandmsales.ca	613-384-7084	613-384-3407	
Dynamic Agencies, Ltd.		Saskatchewan	doug.dynamicage@sasktel.net	306-343-1901	306-343-1901	
J. Levandier Sales, Inc.		Nova Scotia, New Brunswick, Prince Edward Island & Newfoundland	service@jlevandiersales	506-858-1615	506-858-1084	
Kern Industries, Ltd.		Alberta-North	kernind@telusplanet.net	780-451-2056	780-454-6687	
Kern Industries Calgary, Ltd.		Alberta-South	marty.yucytus@kernindustries.ca	403-730-7791	403-239-8179	
Key to the North Sales Agency, Inc.		Ontario-North	hmehes@keytothenorth.ca	705-524-6714	705-566-0148	
Task Controls, Inc.		Ontario	infotoronto@taskcontrols.com	416-291-3004	416-754-3481	
Tom Beggs Agencies Ltd.		Manitoba/NW Ontario	tba@mts.net	204-953-1900	204-774-6915	